

# Chiltern Place

AMERSHAM



**McCarthy & Stone**

— Retirement living to the full —



Computer generated image. Image is indicative only.

# Welcome to Chiltern Place

Chiltern Place is a Retirement Living PLUS development, brought to you by McCarthy & Stone – the only housebuilder to win the Home Builders Federation 5-star award for fourteen years running.

Designed exclusively for the over 70s, this development comprises 38 one and two bedroom apartments with numerous communal facilities such as a Club Lounge, a Wellness Suite\* and a bistro-style restaurant\* which serves freshly prepared food daily.

With flexible support packages\* that can be tailored to suit your needs and management on-site 24 hours a day, Chiltern Place has everything you need to relax and enjoy your retirement.



Typical bistro-style restaurant



“My life is so much easier, more relaxing and I can spend more time with my wife doing the things we love!”

Homeowner,  
Poets Place, Loughton

\*An extra charge applies.



## Picture yourself here

Picture yourself in a spacious and stunning new apartment. Designed to the Lifetime Homes Standard\*, our high quality Retirement Living PLUS apartments are carefully designed and built with pride and attention to detail. There is a fully fitted kitchen, a spacious level access shower room and to selected apartments, walk-in wardrobes. Chrome door furniture and walls painted in a neutral colour emulsion combine to make these truly desirable apartments.



### Designed with you in mind

All Retirement Living PLUS developments are wheelchair friendly and there is a secure mobility scooter room to store and charge your vehicle\*\*.

If bending and lifting is a concern, you will notice that the ovens and plug sockets are a convenient height. There is also a slip resistant finish in the shower room, a walk-in shower and lever taps for ease of use.

The safety features extend into the development where you will find a lift and handrails along the hallways.

### Peace of mind guaranteed

Knowing that help is at hand creates a sense of well-being. There is a 24 hour emergency call system provided by a personal pendant and call points in your bedroom and bathroom, as well as on-site management 24 hours a day.

You will be able to see who is calling for you at the development front door with the camera entry system linked to your TV screen. Getting around at night is helped by having illuminated light switches. You can relax knowing that you are safe and secure.

### Energy efficiency comes as standard

Chiltern Place has been built with energy efficiency in mind, including features such as double glazed windows, mechanical ventilation units, insulated cavity walls and photovoltaic panels which help harness the sun's solar energy. All of which will help to improve the sustainability of Chiltern Place and can help you save on those energy bills.

## Stylish facilities for you to enjoy

Outside your apartment, there are extra facilities to enjoy. At the heart of the development is our counter service bistro-style restaurant and the stylish Club Lounge. It is a lovely place to meet up with friends old and new and is convenient if you don't want to cook for yourself. The bistro serves breakfast, a hot dish of the day and various light snacks. It also serves an array of teas, coffees and pastries.

### Enjoy the development

The stunning bistro^ and Club Lounge is designed for you to relax and dine with your new neighbours.

The Wellness Suite offers a sanctuary in which to retreat and relax. Comprising a hair salon and treatment station, the in-house suite gives you the opportunity to book an appointment in advance and enjoy pampering all in the comfort of your development^.

The fully equipped laundry room provides everything you require for all your washing, drying and ironing needs. The machines are helpfully raised, so there is no need to bend and lift.

We also have Guest Suite accommodation^# with TV and tea and coffee making facilities available for your friends and family to stay, making it easier for you to host your loved ones.

### Socialising with new friends

Socialise as much or as little as you like; your Estate Manager is not only there to take care of the day to day running of the development but is on hand to facilitate events and activities that you can choose to be part of.

Typically, you will find there are book clubs, film nights and day trips^ which can be booked. You can invite your friends and family to participate in events and celebrate all the major occasions throughout the year.

### Outside space to enjoy

You can sit back and relax in the raised landscaped terrace.

## Bistro Menu

### Breakfast

Granola & Yoghurt Fruit Board

### Choose from the following items to build your own breakfast...

Farmhouse sausage, grilled bacon, mushrooms, tomato, hash brown, baked beans & eggs cooked to your liking

### Lunch Bites

#### Baguettes & Sandwiches

Served on a choice of baguette or white/wholemeal bread with Kettle Chips & a side salad

#### Jacket Potatoes

Freshly oven baked potatoes with a choice of fillings

### Salads

A delicious selection of fresh and healthy salads

### Main Meals

Burger & chunky chips  
Roasted ham, free range egg & chips

### Desserts

Indulge yourself with a freshly homemade dessert

### Afternoon Tea

A selection of freshly made finger sandwiches, homemade cakes and scones served with fruit preserve and clotted cream, plus a hot beverage of your choice

### Caffè Latte

Espresso with steamed milk and capped with foamed milk

### Breakfast Tea

Three cup pot of freshly brewed leaf Suki tea

### Cold Beverages

Fruit juices, canned drinks, still & sparkling water

Two Courses: £3.20

Three Courses: £3.80

Example menu. Prices are indicative.

\*Lifetime Homes Standard is a set of 16 design criteria that provide a model for building accessible and adaptable homes. \*\*Spaces subject to availability.

^Additional charge applies. #Subject to availability.



# A management team you can trust

Retirement Living PLUS gives you much more than just a beautiful new apartment. We have a wonderful support and management team at the heart of the development that you will get to know and trust.

## Introducing YourLife

YourLife is regulated by the Care Quality Commission; each Estate Manager who leads the team at the development is personally registered with the Commission. To read the CQC's independent evaluation of our provision, please see: [www.cqc.org.uk/search/yourlife](http://www.cqc.org.uk/search/yourlife)\*

We understand that to provide excellent customer service we need outstanding people. YourLife ensures that their staff have the skills to do a first rate job, invests in training and encourages career development.

All staff are subject to an enhanced certificate from the DBS (The Disclosure and Barring Service) before they commence work alone at the development.

## Domestic assistance is included

One hour of domestic assistance per week, per apartment is already included in your service charge, so many time consuming chores like bed changing and cleaning can be a thing of the past.

You can also book extra time charged from 15 minutes per session for the qualified staff to help you with other personal care and domestic assistance services.

You can book these on a temporary basis, as a one-off or on a regular basis – the choice is yours. Unlike in a traditional care home environment, you will only pay for the support you need.

“It's a real benefit having the restaurant on-site serving such tasty food. I don't have to worry about cooking and it's lovely to enjoy good food with good company.”

Homeowner,  
Lysander House, Ickenham

YourLife  
Care and Management

\*If you don't have internet access, we can print your reports on request.

# Flexible assistance and support

Retirement Living PLUS is all about assisting you in living independently in your own home. If you require additional support today – or you think you might in the future – it is reassuring to know that you have a qualified, reliable and friendly team on your doorstep. Personal assistance and support services can be provided at an extra charge; from as little as 15 minutes per session, which can be increased and decreased to suit your needs.

## Domestic assistance

If you want to add to the one hour of domestic assistance included in your weekly apartment service charge, you can add extra time to help with tasks such as changing the beds, shopping for groceries and posting letters.

## Laundry service

The team can take care of all your laundry requirements, returning your clothes and other items washed, dried and ironed in 24 hours.

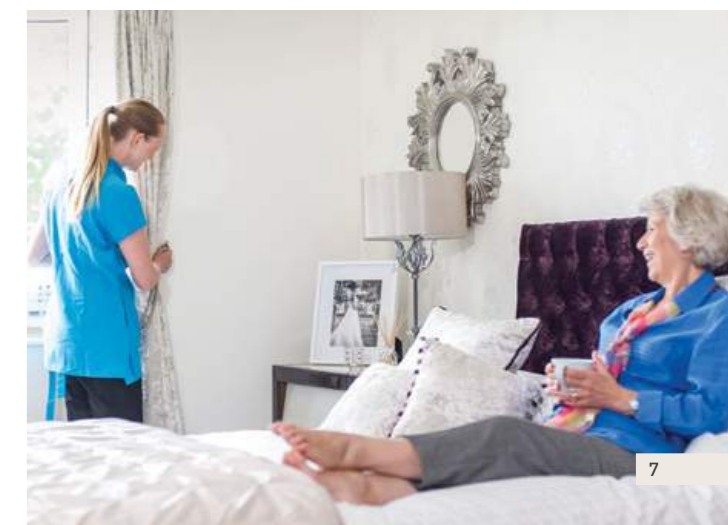
## Lifestyle support

If you fancy a theatre or shopping trip, our team can provide companionship and support, helping you to get out and about.

## Personal assistance

If required, we can help you with services such as going to bed and getting up in the morning, help with medication prompting and convalescence care. There is a whole host of services on offer.

If you think you would like to take advantage of these services, your Sales Consultant can arrange a private, confidential Wellbeing Assessment with the Estate Manager, so you can be sure you have all the assistance and support you need from the moment you move in.

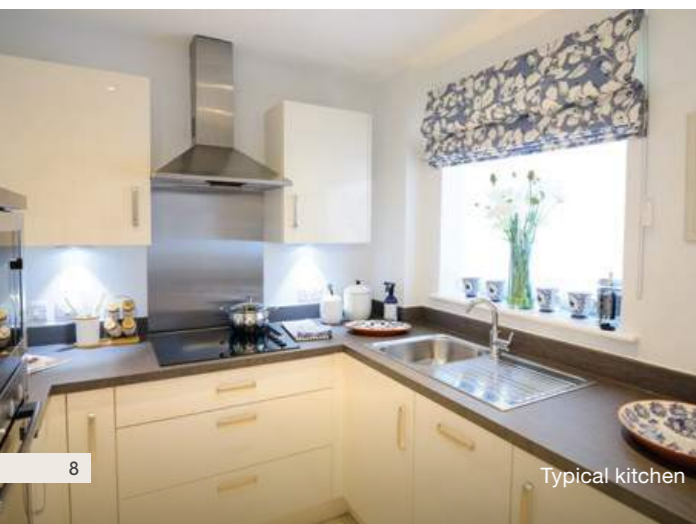




Typical living room



Typical bedroom



Typical kitchen

# Your new apartment in detail

## Apartment Features

### General

- Double glazing
- Walk-in wardrobe to selected apartments
- Telephone and television point in living room and main bedroom
- Sky Q connection point in living room

### Shower room

- Shower room fitted with wall tiles and level access shower
- Slip resistant tile flooring
- Fitted mirror
- Electric shaver socket
- Heated towel rail
- Extractor ventilation

### Kitchen

- Fitted kitchen with integrated fridge, freezer, microwave and ceramic hob
- Ivory gloss units
- Mid-height oven
- Cooker hood
- Anthracite granite composite sink with lever taps
- Under cabinet lighting

### Heating and finishes

- Wet radiators
- Walls painted in a neutral colour emulsion
- Oak veneered doors
- Chrome door furniture

### Safety and security

- Camera entry system for use with a standard TV
- 24 hour emergency call system provided by personal pendant and pull points in your bedroom and bathroom
- Intruder alarm
- Mains connected smoke detector
- Illuminated light switches for bathroom and main bedroom
- Fire detection equipment

## Development Features

- Club Lounge
- Bistro-style restaurant<sup>^</sup>
- 24 hour on-site management
- Estate Manager and YourLife team
- Domestic assistance (one hour per week included in service charge, additional hours by arrangement<sup>^</sup>)
- Personal care packages available from the on-site CQC registered YourLife team<sup>^</sup>
- Wheelchair friendly
- Guest Suite<sup>^#</sup>
- Communal laundry facilities
- Wellness Suite<sup>^</sup>
- Lifts to all floors
- Landscaped garden
- Mobility scooter store<sup>#</sup>
- Car parking available on-site<sup>^#</sup> (please ask a Sales Consultant for more details)

# 10 Year Warranty

## Your apartment comes with a 10 Year NHBC warranty

<sup>^</sup>Extra charge applies. <sup>#</sup>Subject to availability.



Registered builder



# Chiltern Place

Development Layout



# Chiltern Place

Ground Floor

- 1 bedroom apartment
- 2 bedroom apartment
- Communal / staff areas

- L Lift
- P Plant room
- WC Toilet

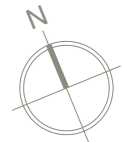
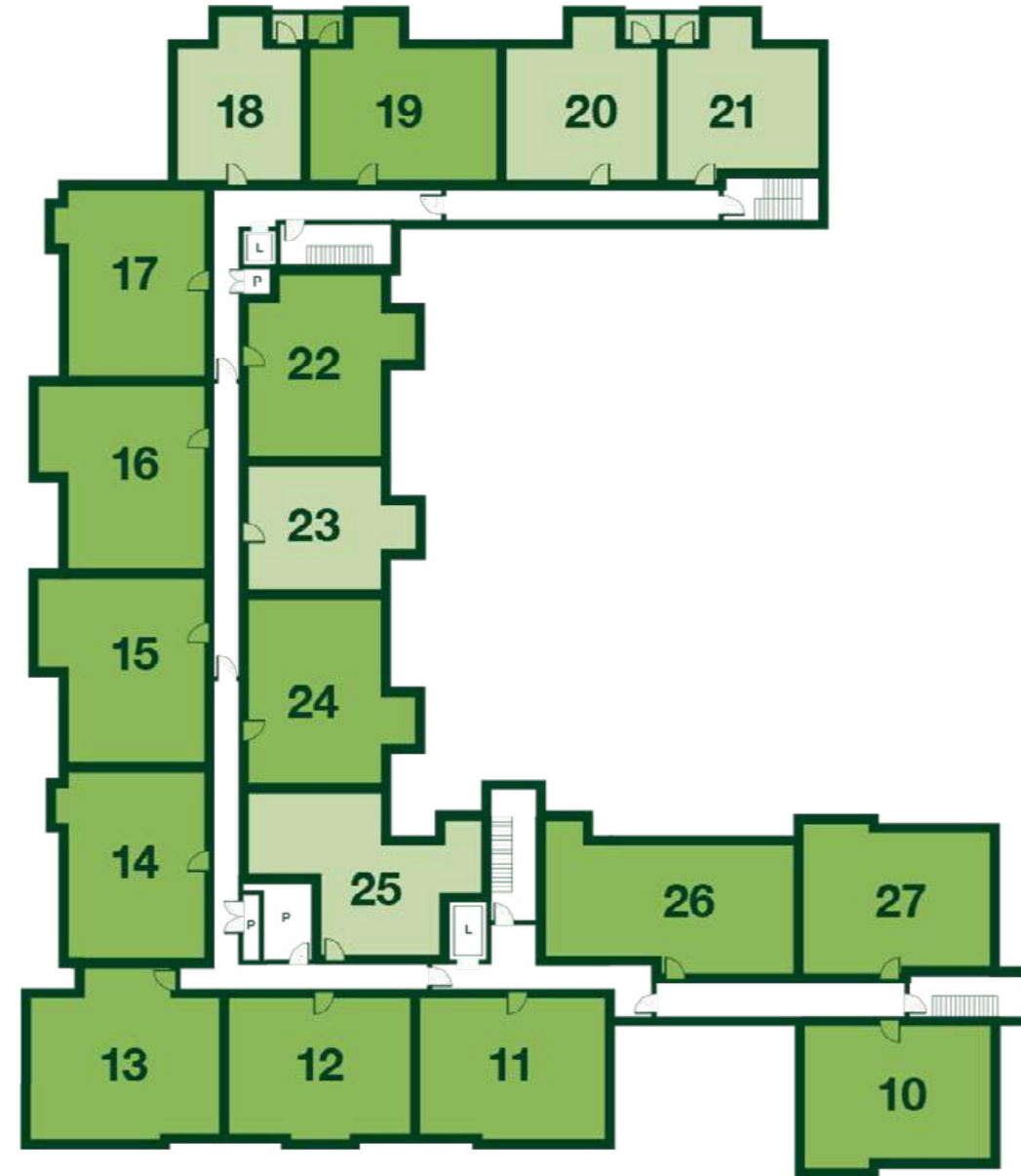


# Chiltern Place

First Floor

- 1 bedroom apartment
- 2 bedroom apartment
- Communal / staff areas

L Lift  
P Plant room

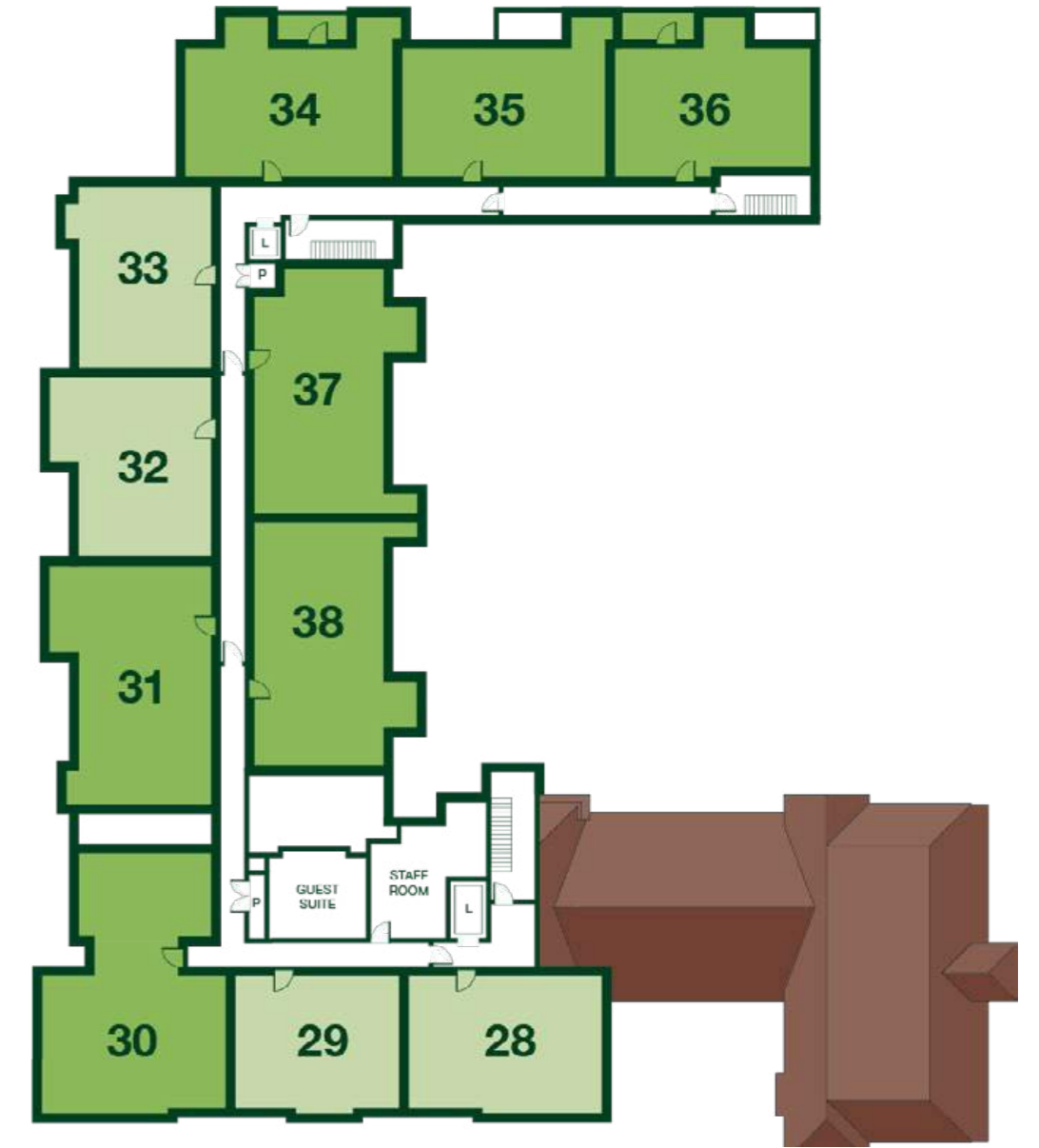


# Chiltern Place

Second Floor

- 1 bedroom apartment
- 2 bedroom apartment
- Communal / staff areas

L Lift  
P Plant room



# The Aldbury

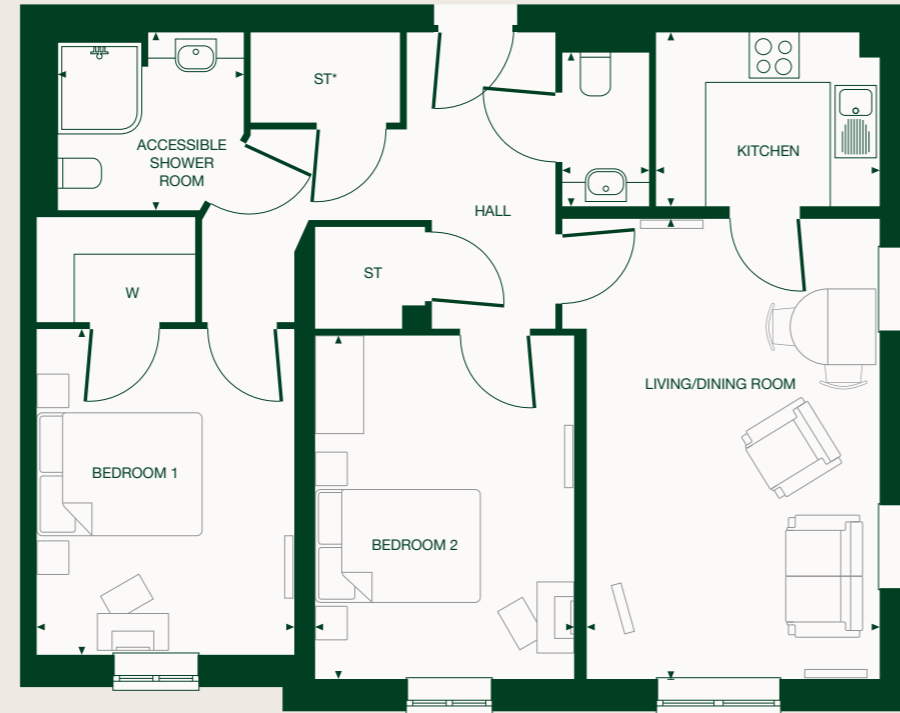
Apartment:

Ground Floor | 01 | 02 |

First Floor | 11 | 12 |

Living room	17' 3" x 11' 7"	(5249mm x 3534mm)
Kitchen	8' 10" x 6' 11"	(2700mm x 2100mm)
Bedroom 1	12' 10" x 10' 2"	(3922mm x 3109mm)
Bedroom 2	13' 7" x 10' 2"	(4139mm x 3109mm)
Shower room	7' 4" x 7' 1"	(2247mm x 2147mm)

\* Arrows denote measurement points. The dimensions given on plans are for general guidance only, and should not be used for carpet sizes, appliance spaces or items of furniture. Although every effort has been made to ensure accuracy, dimensions quoted are subject to final measurement on completion of actual apartment. No responsibility can be accepted for any misstatement of this leaflet, which is not a contract nor forms any part of any contract. Apartments showcase illustrations only; they may be handed alternately and room sizes may vary. \*Store cupboards contain hot water cylinders, washer dryers, ventilation units and electric meters. Please ask your Sales Consultant for individual apartment plans.



W Wardrobe  
ST\* Storage cupboard

# The Aston

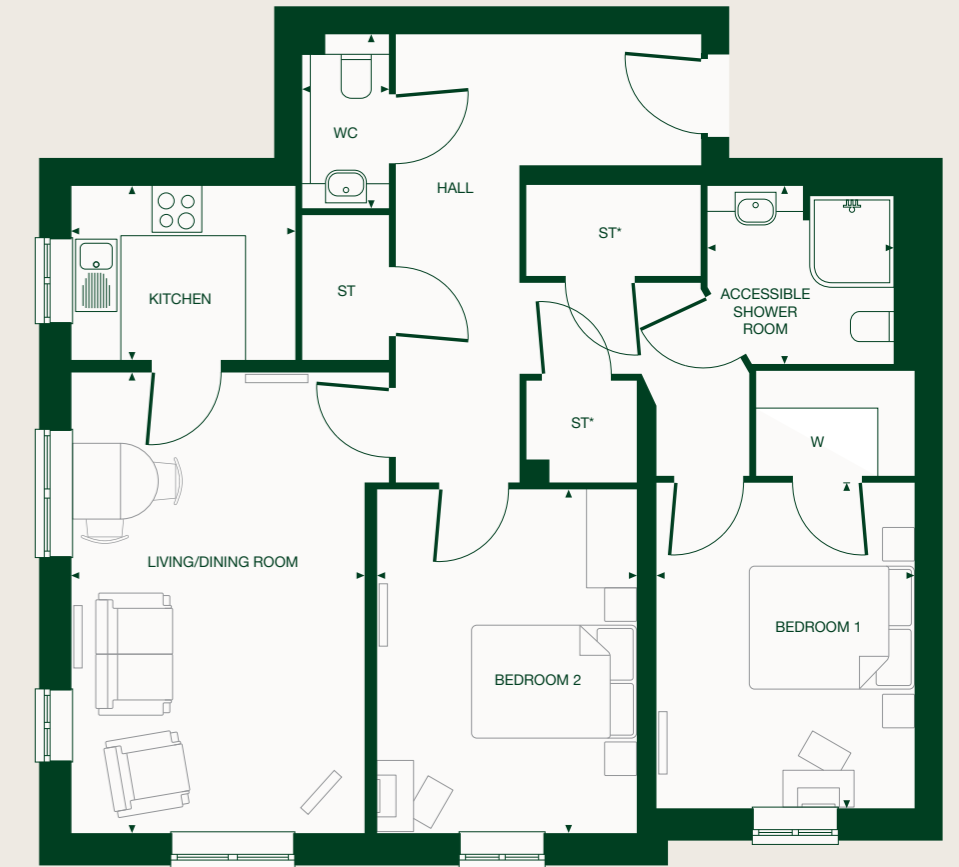
Apartments:

Ground Floor | 03 |

First Floor | 13 |

Living room	18' 2" x 11' 7"	(5547mm x 3534mm)
Kitchen	8' 10" x 6' 11"	(2700mm x 2100mm)
Bedroom 1	12' 10" x 10' 2"	(3922mm x 3109mm)
Bedroom 2	13' 7" x 10' 3"	(4140mm x 3130mm)
Shower room	7' 4" x 7' 1"	(2247mm x 2147mm)
WC	6' 11" x 3' 5"	(2100mm x 1050mm)

\* Arrows denote measurement points. The dimensions given on plans are for general guidance only, and should not be used for carpet sizes, appliance spaces or items of furniture. Although every effort has been made to ensure accuracy, dimensions quoted are subject to final measurement on completion of actual apartment. No responsibility can be accepted for any misstatement of this leaflet, which is not a contract nor forms any part of any contract. Apartments showcase illustrations only; they may be handed alternately and room sizes may vary. \*Store cupboards contain hot water cylinders, washer dryers, ventilation units and electric meters. Please ask your Sales Consultant for individual apartment plans.



\*Bay window to living room of plot 3

W Wardrobe  
ST\* Storage cupboard



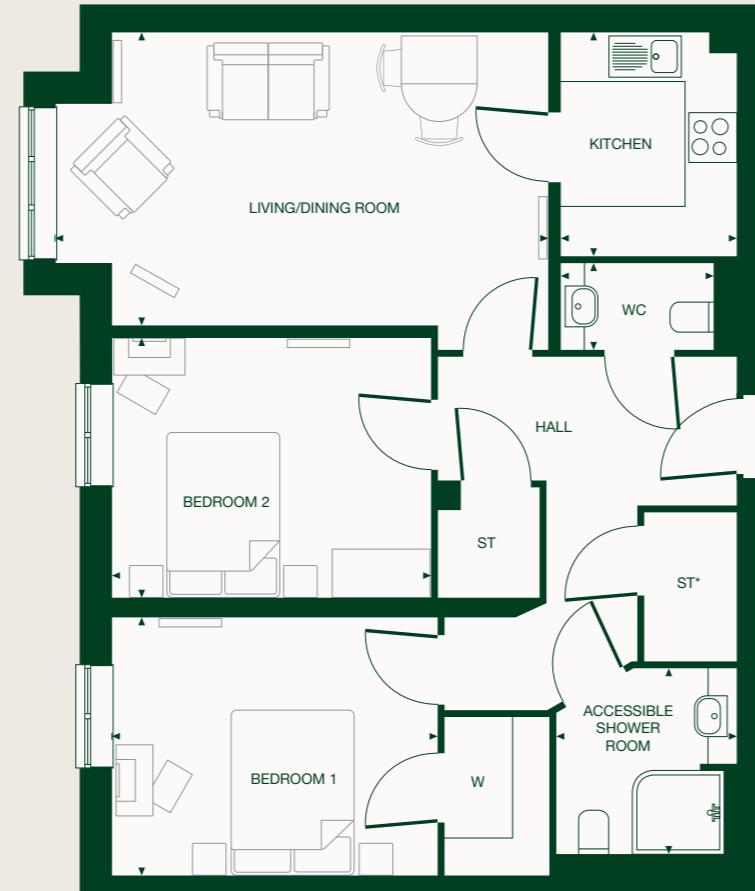
# The Brook

Apartment:

<b>Ground Floor</b>	04   07
<b>First Floor</b>	14   17

Living room	19' 6" x 11' 7"	(5955mm x 3534mm)
Kitchen	8' 10" x 6' 11"	(2700mm x 2100mm)
Bedroom 1	12' 10" x 10' 2"	(3922mm x 3109mm)
Bedroom 2	12' 7" x 10' 2"	(3841mm x 3109mm)
Shower room	7' 4" x 7' 1"	(2247mm x 2147mm)
WC	6' 11" x 3' 5"	(2100mm x 1050mm)

\* Arrows denote measurement points. The dimensions given on plans are for general guidance only, and should not be used for carpet sizes, appliance spaces or items of furniture. Although every effort has been made to ensure accuracy, dimensions quoted are subject to final measurement on completion of actual apartment. No responsibility can be accepted for any misstatement of this leaflet, which is not a contract nor forms any part of any contract. Apartments showcase illustrations only; they may be handed alternately and room sizes may vary. \*Store cupboards contain hot water cylinders, washer dryers, ventilation units and electric meters. Please ask your Sales Consultant for individual apartment plans.



W Wardrobe  
ST\* Storage cupboard

# The Chesham

Apartments:

<b>Ground Floor</b>	05   06   09^
<b>First Floor</b>	15   16   19^
	22^   24

Living room	24' 4" x 11' 8"	(7423mm x 3544mm)
Apartment 05,06,15,16		
Living room	19' 2" x 11' 8"	(5847mm x 3544mm)
Apartment 09,19,22,24		
Kitchen	8' 1" x 9' 11"	(2473mm x 3030mm)
Bedroom 1	16' 2" x 10' 4"	(4916mm x 3149mm)
Bedroom 2	15' 0" x 10' 6"	(4576mm x 3200mm)
En-suite shower room	7' 1" x 7' 4"	(2147mm x 2247mm)
Shower room	5' 2" x 7' 0"	(1567mm x 2140mm)

\* Arrows denote measurement points. The dimensions given on plans are for general guidance only, and should not be used for carpet sizes, appliance spaces or items of furniture. Although every effort has been made to ensure accuracy, dimensions quoted are subject to final measurement on completion of actual apartment. No responsibility can be accepted for any misstatement of this leaflet, which is not a contract nor forms any part of any contract. Apartments showcase illustrations only; they may be handed alternately and room sizes may vary. \*Store cupboards contain hot water cylinders, washer dryers, ventilation units and electric meters. Please ask your Sales Consultant for individual apartment plans.



^ Plots 09, 19 and 22 are handed

\* Terrace to plots 05 and 06  
\*\* Balcony to plots 09 and 19  
† Bay window to plots 15 and 16

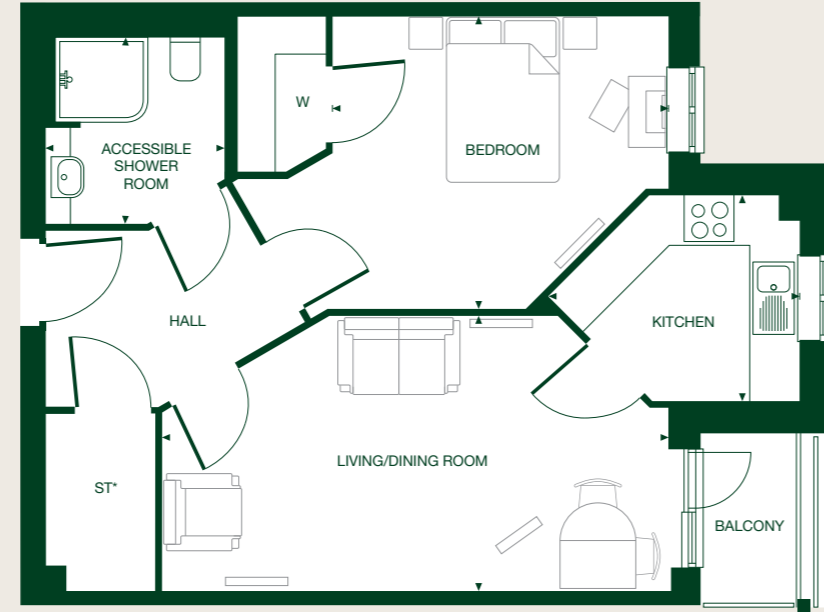
W Wardrobe  
ST\* Storage cupboard

# The Chalfont

Apartments:

<b>Ground Floor</b>	08
<b>First Floor</b>	18   20^   23^

Living room Apartment 08,18,23	20' 0" x 10' 10"	(6097mm x 3314mm)
Living room Apartment 20	20' 0" x 15' 3"	(6097mm x 4639mm)
Kitchen	8' 1" x 10' 0"	(2473mm x 3030mm)
Bedroom	13' 7" x 11' 7"	(4132mm x 3519mm)
Shower room	7' 1" x 7' 4"	(2147mm x 2247mm)



^Plots 20 and 23 are handed

Plot 23 has no balcony

W Wardrobe  
ST\* Storage cupboard

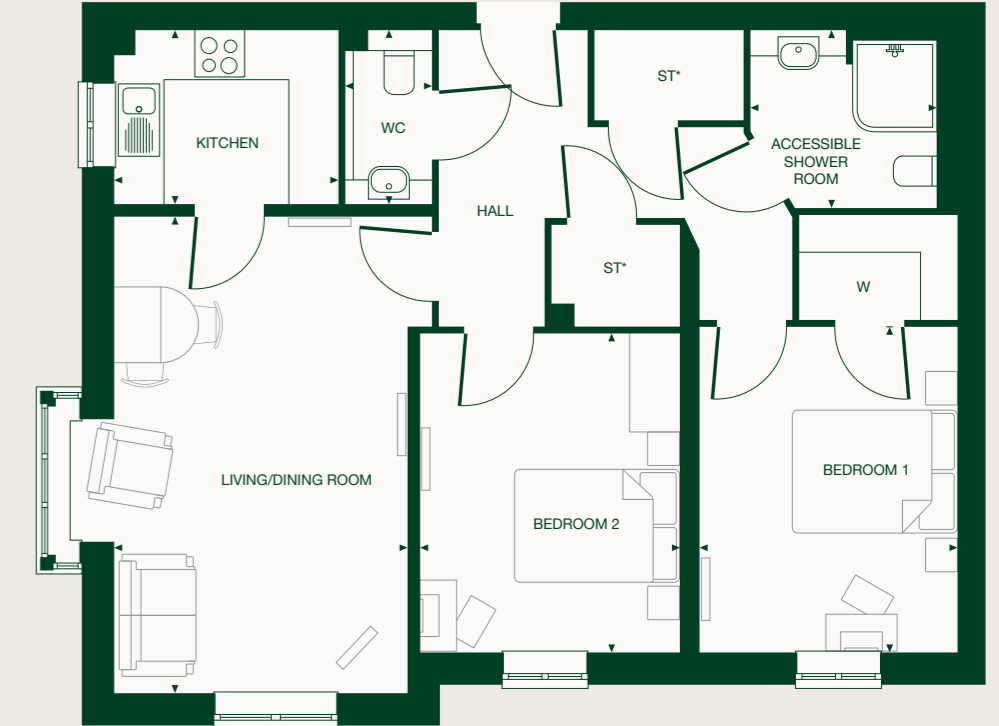
\* Arrows denote measurement points. The dimensions given on plans are for general guidance only, and should not be used for carpet sizes, appliance spaces or items of furniture. Although every effort has been made to ensure accuracy, dimensions quoted are subject to final measurement on completion of actual apartment. No responsibility can be accepted for any misstatement of this leaflet, which is not a contract nor forms any part of any contract. Apartments showcase illustrations only; they may be handed alternately and room sizes may vary. \*Store cupboards contain hot water cylinders, washer dryers, ventilation units and electric meters. Please ask your Sales Consultant for individual apartment plans.

# The Coombe

Apartment:

<b>First Floor</b>	10
--------------------	----

Living room	18' 10" x 11' 7"	(5738mm x 3534mm)
Kitchen	8' 10" x 6' 11"	(2700mm x 2100mm)
Bedroom 1	12' 10" x 10' 2"	(3922mm x 3109mm)
Bedroom 2	12' 7" x 10' 3"	(3842mm x 3130mm)
Shower room	7' 4" x 7' 1"	(2247mm x 2147mm)
WC	6' 11" x 3' 5"	(2100mm x 1050mm)



\* Arrows denote measurement points. The dimensions given on plans are for general guidance only, and should not be used for carpet sizes, appliance spaces or items of furniture. Although every effort has been made to ensure accuracy, dimensions quoted are subject to final measurement on completion of actual apartment. No responsibility can be accepted for any misstatement of this leaflet, which is not a contract nor forms any part of any contract. Apartments showcase illustrations only; they may be handed alternately and room sizes may vary. \*Store cupboards contain hot water cylinders, washer dryers, ventilation units and electric meters. Please ask your Sales Consultant for individual apartment plans.

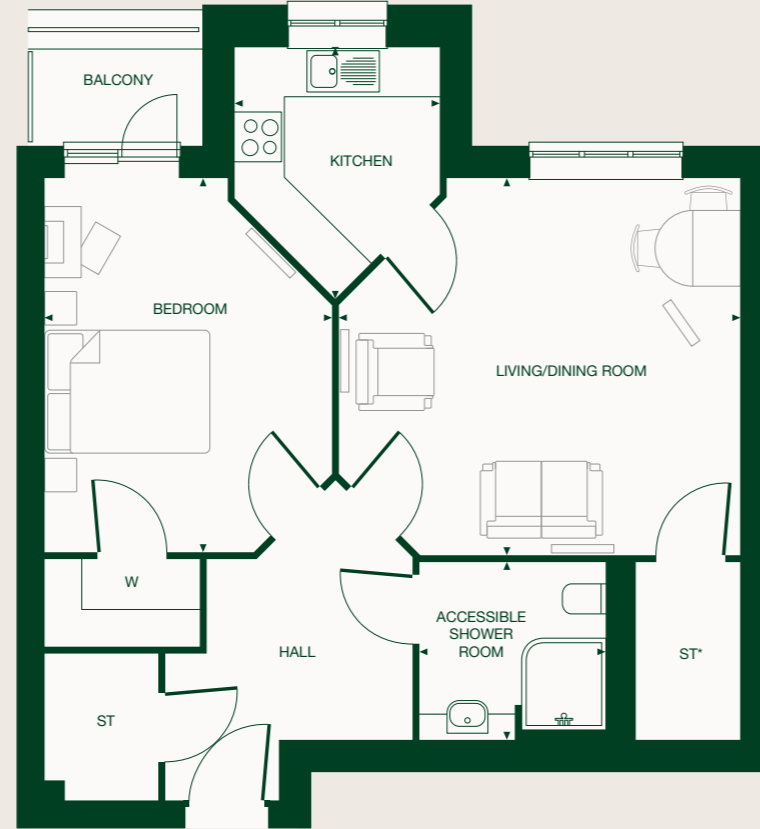
W Wardrobe  
ST\* Storage cupboard

# The Fawley

Apartment:

**First Floor** | 21 |

Living room	15' 10" x 14' 11"	(4830mm x 4541mm)
Kitchen	8' 1" x 9' 11"	(2473mm x 3035mm)
Bedroom	11' 4" x 14' 9"	(3462mm x 4506mm)
Shower room	7' 4" x 7' 1"	(2247mm x 2147mm)



W Wardrobe  
ST\* Storage cupboard

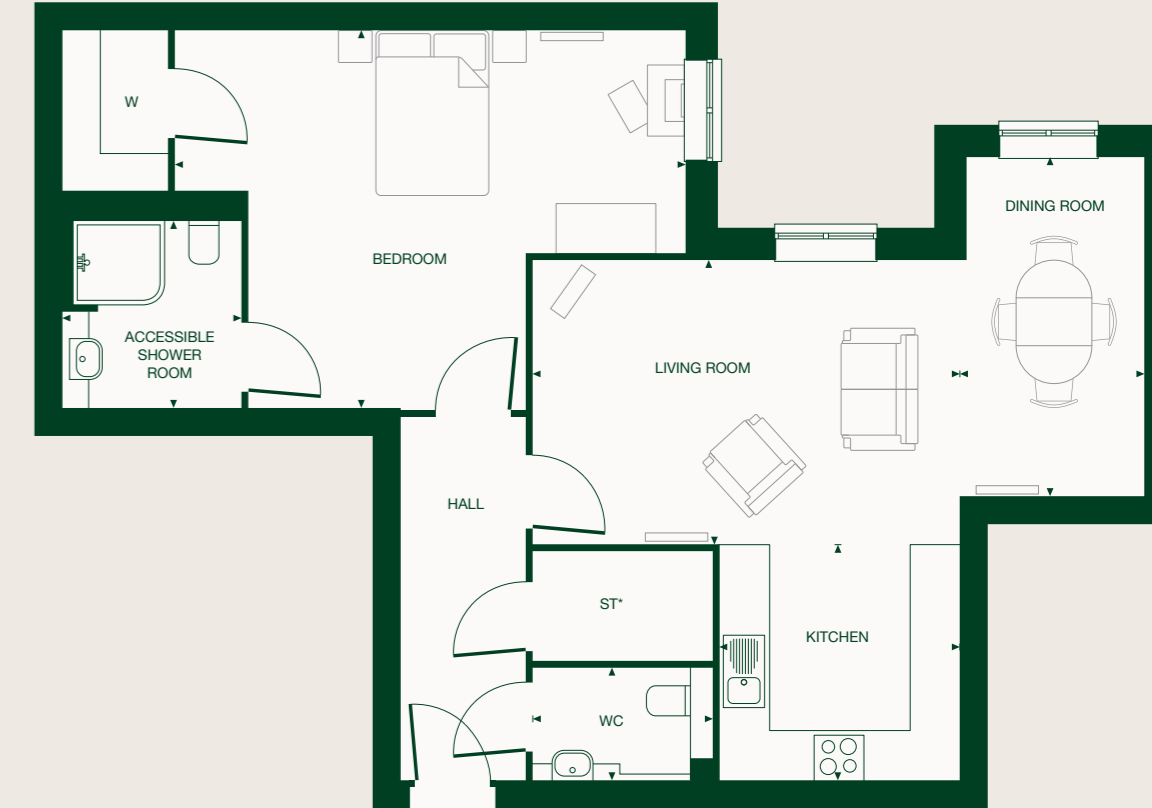
\* Arrows denote measurement points. The dimensions given on plans are for general guidance only, and should not be used for carpet sizes, appliance spaces or items of furniture. Although every effort has been made to ensure accuracy, dimensions quoted are subject to final measurement on completion of actual apartment. No responsibility can be accepted for any misstatement of this leaflet, which is not a contract nor forms any part of any contract. Apartments showcase illustrations only; they may be handed alternately and room sizes may vary. \*Store cupboards contain hot water cylinders, washer dryers, ventilation units and electric meters. Please ask your Sales Consultant for individual apartment plans.

# The Hamble

Apartment:

**First Floor** | 25 |

Living room	16' 10" x 11' 3"	(5140mm x 3424mm)
Dining room	7' 3" x 13' 5"	(2222mm x 4085mm)
Kitchen	9' 6" x 9' 4"	(2891mm x 2836mm)
Bedroom	20' 2" x 14' 11"	(6143mm x 4548mm)
Shower room	7' 1" x 7' 5"	(2147mm x 2255mm)
WC	7' 1" x 4' 6"	(2159mm x 1366mm)



W Wardrobe  
ST\* Storage cupboard

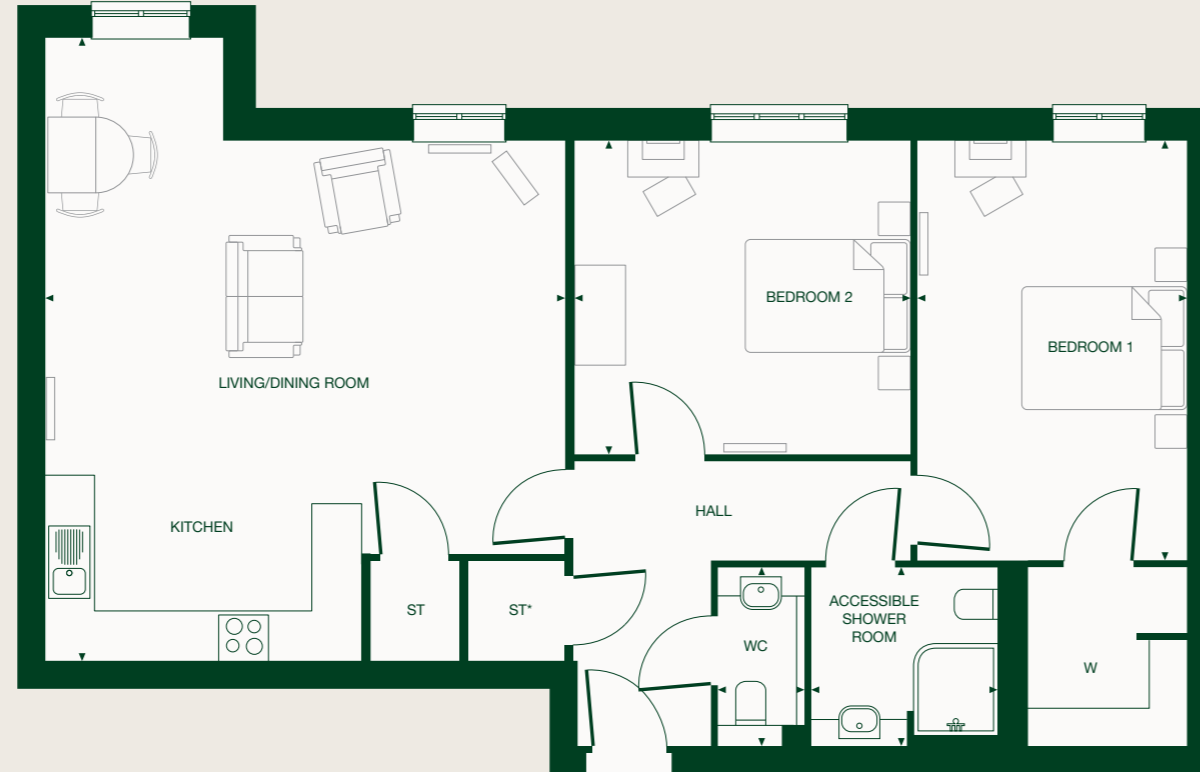
\* Arrows denote measurement points. The dimensions given on plans are for general guidance only, and should not be used for carpet sizes, appliance spaces or items of furniture. Although every effort has been made to ensure accuracy, dimensions quoted are subject to final measurement on completion of actual apartment. No responsibility can be accepted for any misstatement of this leaflet, which is not a contract nor forms any part of any contract. Apartments showcase illustrations only; they may be handed alternately and room sizes may vary. \*Store cupboards contain hot water cylinders, washer dryers, ventilation units and electric meters. Please ask your Sales Consultant for individual apartment plans.

# The Henley

Apartment:

**First Floor** | 26 |

Living/Kitchen	20' 5" x 24' 6"	(6240mm x 7498mm)
Bedroom 1	10' 8" x 16' 8"	(3249mm x 5070mm)
Bedroom 2	13' 3" x 12' 5"	(4048mm x 3779mm)
Shower room	7' 4" x 7' 1"	(2247mm x 2156mm)
WC	3' 5" x 7' 1"	(1050mm x 2156mm)



W Wardrobe  
ST\* Storage cupboard

\* Arrows denote measurement points. The dimensions given on plans are for general guidance only, and should not be used for carpet sizes, appliance spaces or items of furniture. Although every effort has been made to ensure accuracy, dimensions quoted are subject to final measurement on completion of actual apartment. No responsibility can be accepted for any misstatement of this leaflet, which is not a contract nor forms any part of any contract. Apartments showcase illustrations only; they may be handed alternately and room sizes may vary. \*Store cupboards contain hot water cylinders, washer dryers, ventilation units and electric meters. Please ask your Sales Consultant for individual apartment plans.

# The Hyde

Apartment:

**First Floor** | 27 |

Living room	19' 10" x 11' 7"	(6048mm x 3534mm)
Kitchen	8' 10" x 6' 11"	(2700mm x 2100mm)
Bedroom 1	12' 10" x 10' 2"	(3922mm x 3109mm)
Bedroom 2	12' 7" x 10' 3"	(3842mm x 3130mm)
Shower room	7' 4" x 7' 1"	(2247mm x 2147mm)
WC	6' 11" x 3' 5"	(2100mm x 1050mm)



W Wardrobe  
ST\* Storage cupboard

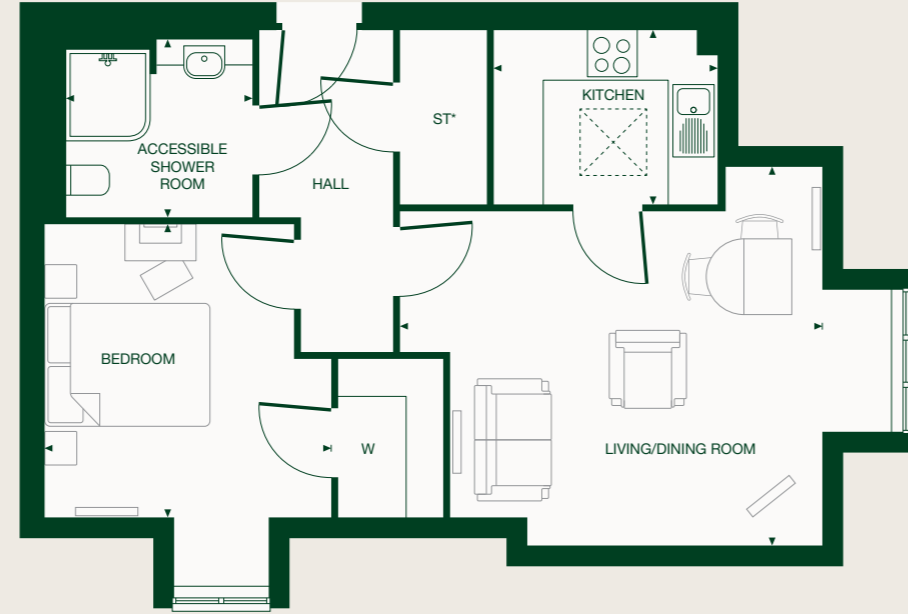
\* Arrows denote measurement points. The dimensions given on plans are for general guidance only, and should not be used for carpet sizes, appliance spaces or items of furniture. Although every effort has been made to ensure accuracy, dimensions quoted are subject to final measurement on completion of actual apartment. No responsibility can be accepted for any misstatement of this leaflet, which is not a contract nor forms any part of any contract. Apartments showcase illustrations only; they may be handed alternately and room sizes may vary. \*Store cupboards contain hot water cylinders, washer dryers, ventilation units and electric meters. Please ask your Sales Consultant for individual apartment plans.

# The Jubilee

Apartment:

Second Floor | 28 |

Living room	16' 9" x 14' 11"	(5111mm x 4558mm)
Kitchen	8' 10" x 6' 11"	(2689mm x 2101mm)
Bedroom	11' 4" x 11' 7"	(3454mm x 3531mm)
Shower room	7' 4" x 7' 1"	(2247mm x 2148mm)



Velux skylight

W Wardrobe  
ST\* Storage cupboard

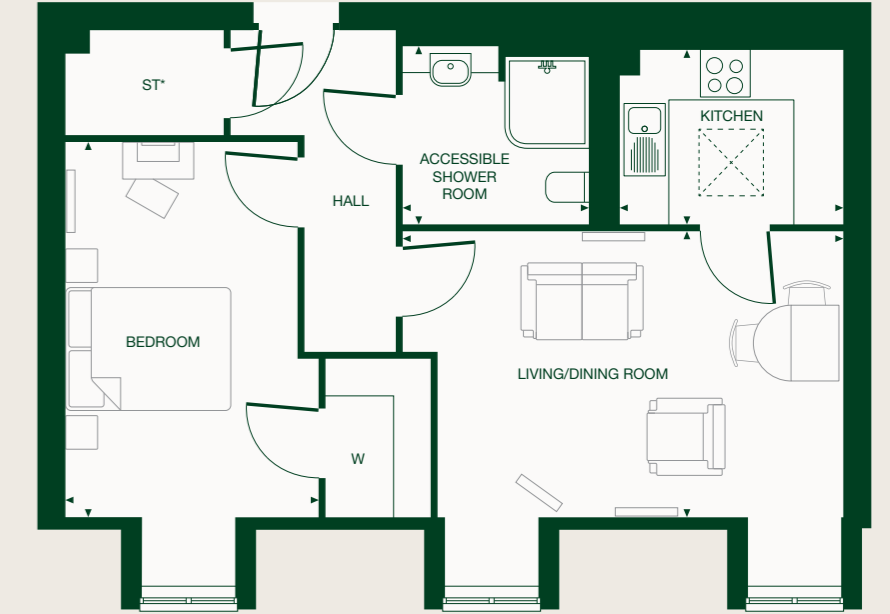
\* Arrows denote measurement points. The dimensions given on plans are for general guidance only, and should not be used for carpet sizes, appliance spaces or items of furniture. Although every effort has been made to ensure accuracy, dimensions quoted are subject to final measurement on completion of actual apartment. No responsibility can be accepted for any misstatement of this leaflet, which is not a contract nor forms any part of any contract. Apartments showcase illustrations only; they may be handed alternately and room sizes may vary. \*Store cupboards contain hot water cylinders, washer dryers, ventilation units and electric meters. Please ask your Sales Consultant for individual apartment plans.

# The Kingwood

Apartment:

Second Floor | 29 |

Living room	17' 5" x 11' 4"	(5306mm x 3444mm)
Kitchen	8' 10" x 6' 11"	(2700mm x 2101mm)
Bedroom	10' 1" x 14' 10"	(3052mm x 4516mm)
Shower room	7' 4" x 7' 1"	(2247mm x 2148mm)



Velux skylight

W Wardrobe  
ST\* Storage cupboard

\* Arrows denote measurement points. The dimensions given on plans are for general guidance only, and should not be used for carpet sizes, appliance spaces or items of furniture. Although every effort has been made to ensure accuracy, dimensions quoted are subject to final measurement on completion of actual apartment. No responsibility can be accepted for any misstatement of this leaflet, which is not a contract nor forms any part of any contract. Apartments showcase illustrations only; they may be handed alternately and room sizes may vary. \*Store cupboards contain hot water cylinders, washer dryers, ventilation units and electric meters. Please ask your Sales Consultant for individual apartment plans.

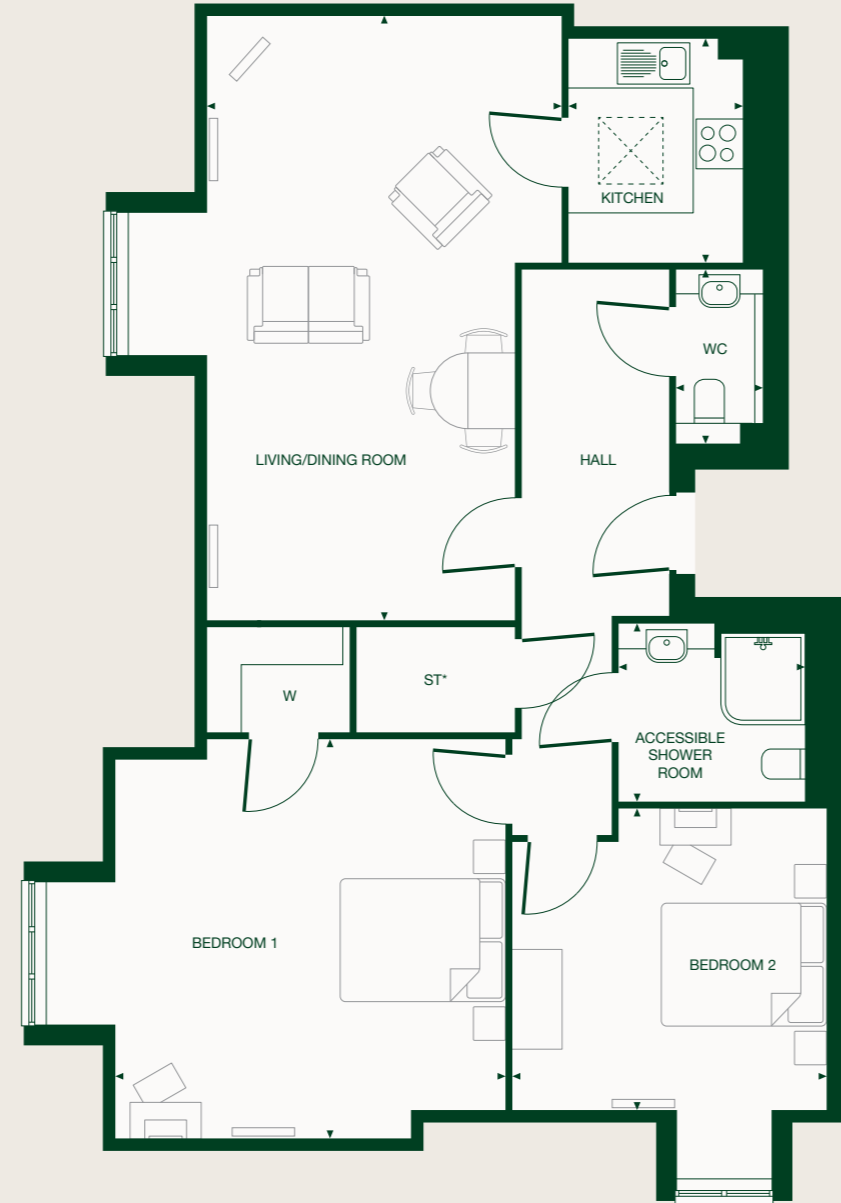
# The Lacey

Apartment:

**Second Floor** | 30 |

Living room	14' 0" x 23' 10"	(4271mm x 7272mm)
Kitchen	7' 8" x 8' 10"	(2343mm x 2702mm)
Bedroom 1	15' 5" x 15' 9"	(4699mm x 4801mm)
Bedroom 2	12' 5" x 11' 11"	(3783mm x 3631mm)
Shower room	7' 4" x 7' 1"	(2247mm x 2148mm)
WC	3' 5" x 6' 11"	(1051mm x 2101mm)

\* Arrows denote measurement points. The dimensions given on plans are for general guidance only, and should not be used for carpet sizes, appliance spaces or items of furniture. Although every effort has been made to ensure accuracy, dimensions quoted are subject to final measurement on completion of actual apartment. No responsibility can be accepted for any misstatement of this leaflet, which is not a contract nor forms any part of any contract. Apartments showcase illustrations only; they may be handed alternately and room sizes may vary. \*Store cupboards contain hot water cylinders, washer dryers, ventilation units and electric meters. Please ask your Sales Consultant for individual apartment plans.



Velux skylight

W Wardrobe  
ST\* Storage cupboard

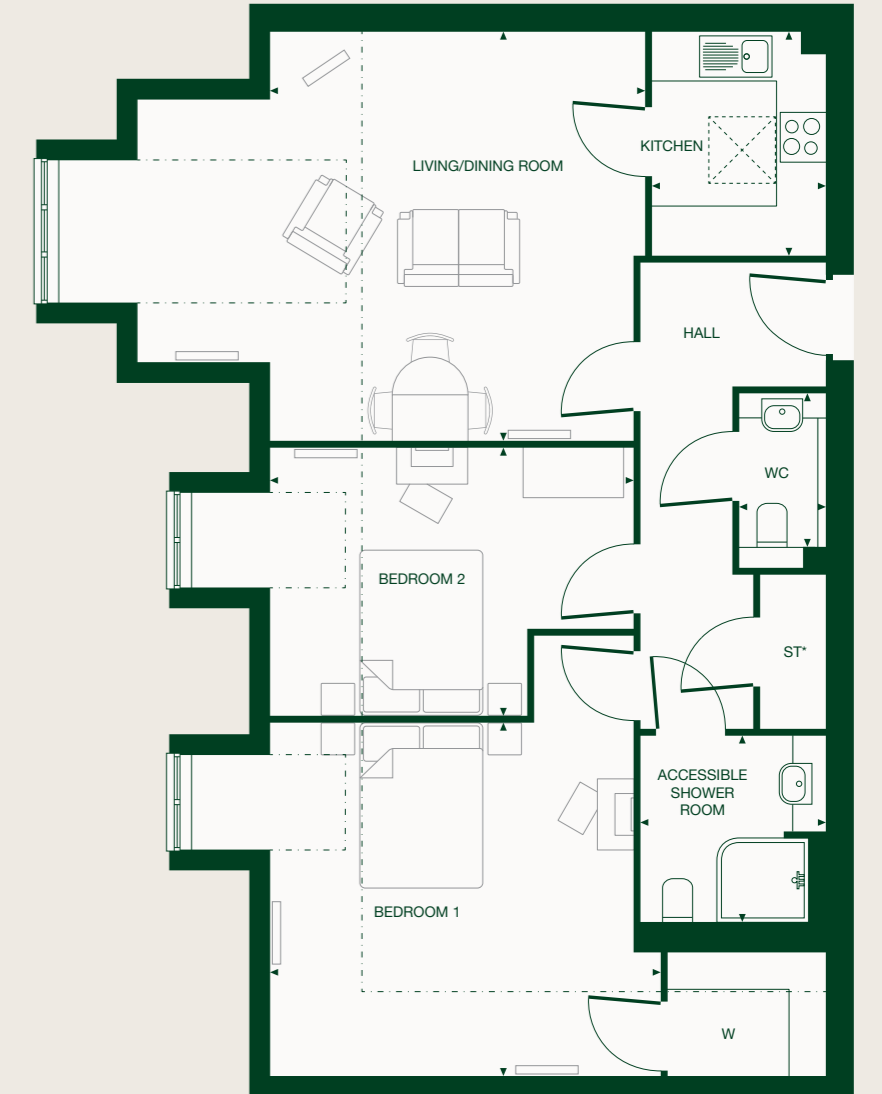
# The Marlow

Apartment:

**Second Floor** | 31 |

Living room	14' 10" x 16' 2"	(4514mm x 4924mm)
Kitchen	6' 11" x 8' 10"	(2101mm x 2699mm)
Bedroom 1	15' 5" x 14' 0"	(4703mm x 4256mm)
Bedroom 2	14' 4" x 10' 7"	(4376mm x 3230mm)
Shower room	6' 8" x 7' 5"	(2028mm x 2248mm)
WC	3' 5" x 6' 0"	(1052mm x 1838mm)

\* Arrows denote measurement points. The dimensions given on plans are for general guidance only, and should not be used for carpet sizes, appliance spaces or items of furniture. Although every effort has been made to ensure accuracy, dimensions quoted are subject to final measurement on completion of actual apartment. No responsibility can be accepted for any misstatement of this leaflet, which is not a contract nor forms any part of any contract. Apartments showcase illustrations only; they may be handed alternately and room sizes may vary. \*Store cupboards contain hot water cylinders, washer dryers, ventilation units and electric meters. Please ask your Sales Consultant for individual apartment plans.



Dotted lines denote sloping ceiling height.

Velux skylight

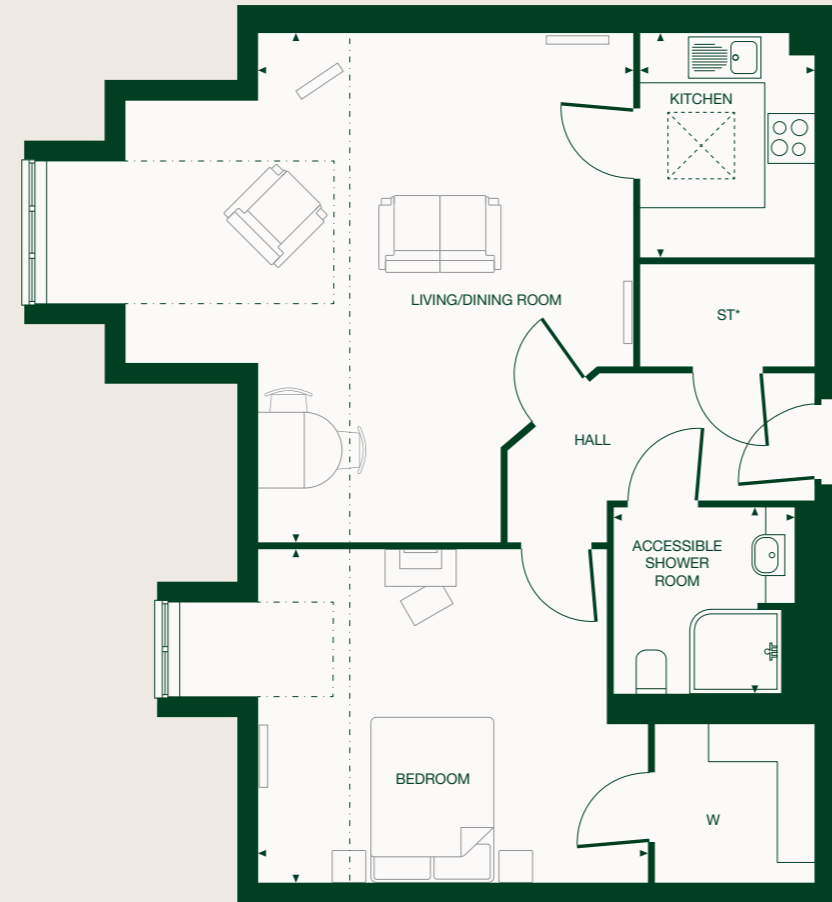
W Wardrobe  
ST\* Storage cupboard

# The Oakley

Apartment:

Second Floor | 32 |

Living room	14' 0" x 20' 1"	(4515mm x 6123mm)
Kitchen	6' 11" x 8' 10"	(2101mm x 2700mm)
Bedroom	15' 5" x 13' 2"	(4689mm x 4017mm)
Shower room	7' 1" x 7' 5"	(2148mm x 2248mm)



Dotted lines denote sloping ceiling height.

Velux skylight

W Wardrobe  
ST\* Storage cupboard

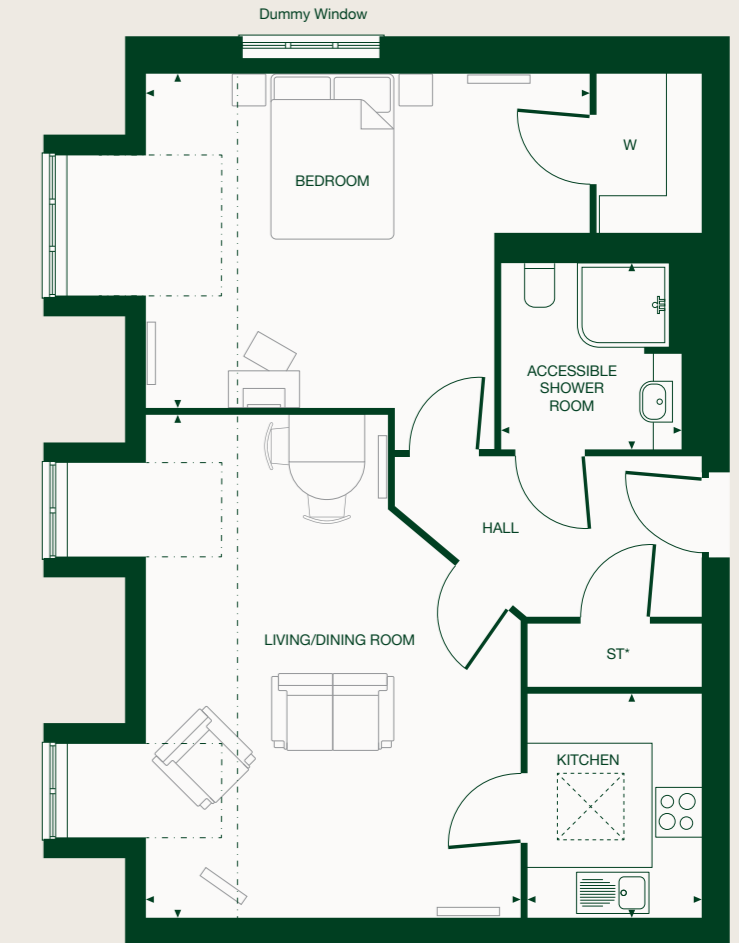
\* Arrows denote measurement points. The dimensions given on plans are for general guidance only, and should not be used for carpet sizes, appliance spaces or items of furniture. Although every effort has been made to ensure accuracy, dimensions quoted are subject to final measurement on completion of actual apartment. No responsibility can be accepted for any misstatement of this leaflet, which is not a contract nor forms any part of any contract. Apartments showcase illustrations only; they may be handed alternately and room sizes may vary. \*Store cupboards contain hot water cylinders, washer dryers, ventilation units and electric meters. Please ask your Sales Consultant for individual apartment plans.

# The Taplow

Apartment:

Second Floor | 33 |

Living room	14' 10" x 19' 10"	(4515mm x 6052mm)
Kitchen	6' 11" x 8' 10"	(2101mm x 2700mm)
Bedroom	17' 6" x 13' 2"	(5344mm x 4025mm)
Shower room	7' 1" x 7' 5"	(2147mm x 2248mm)



Dotted lines denote sloping ceiling height.

Velux skylight

W Wardrobe  
ST\* Storage cupboard

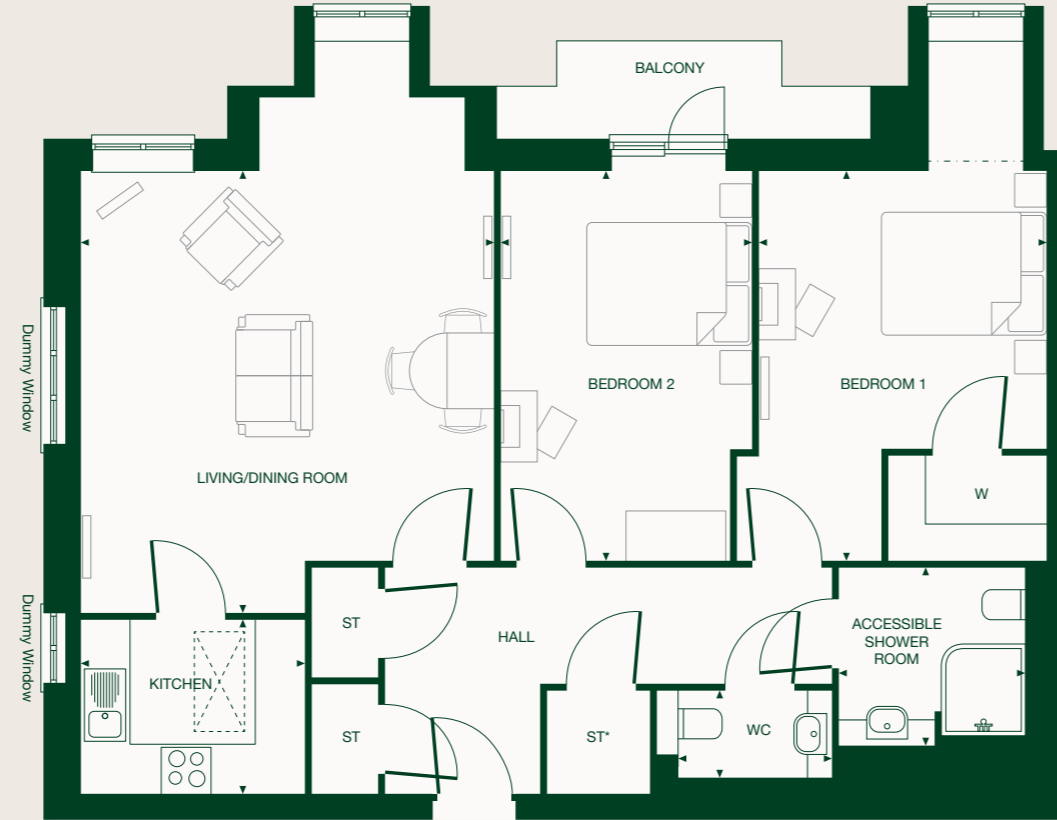
\* Arrows denote measurement points. The dimensions given on plans are for general guidance only, and should not be used for carpet sizes, appliance spaces or items of furniture. Although every effort has been made to ensure accuracy, dimensions quoted are subject to final measurement on completion of actual apartment. No responsibility can be accepted for any misstatement of this leaflet, which is not a contract nor forms any part of any contract. Apartments showcase illustrations only; they may be handed alternately and room sizes may vary. \*Store cupboards contain hot water cylinders, washer dryers, ventilation units and electric meters. Please ask your Sales Consultant for individual apartment plans.

# The Vale

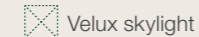
Apartment:

Second Floor | 34 |

Living room	16' 4" x 17' 5"	(4975mm x 5321mm)
Kitchen	8' 10" x 6' 11"	(2701mm x 2100mm)
Bedroom 1	11' 4" x 15' 5"	(3467mm x 4697mm)
Bedroom 2	9' 11" x 15' 5"	(3028mm x 4697mm)
Shower room	7' 5" x 7' 1"	(2248mm x 2148mm)
WC	6' 0" x 3' 5"	(1839mm x 1051mm)



Dotted line denotes sloping ceiling height.



Velux skylight

W Wardrobe

ST\* Storage cupboard

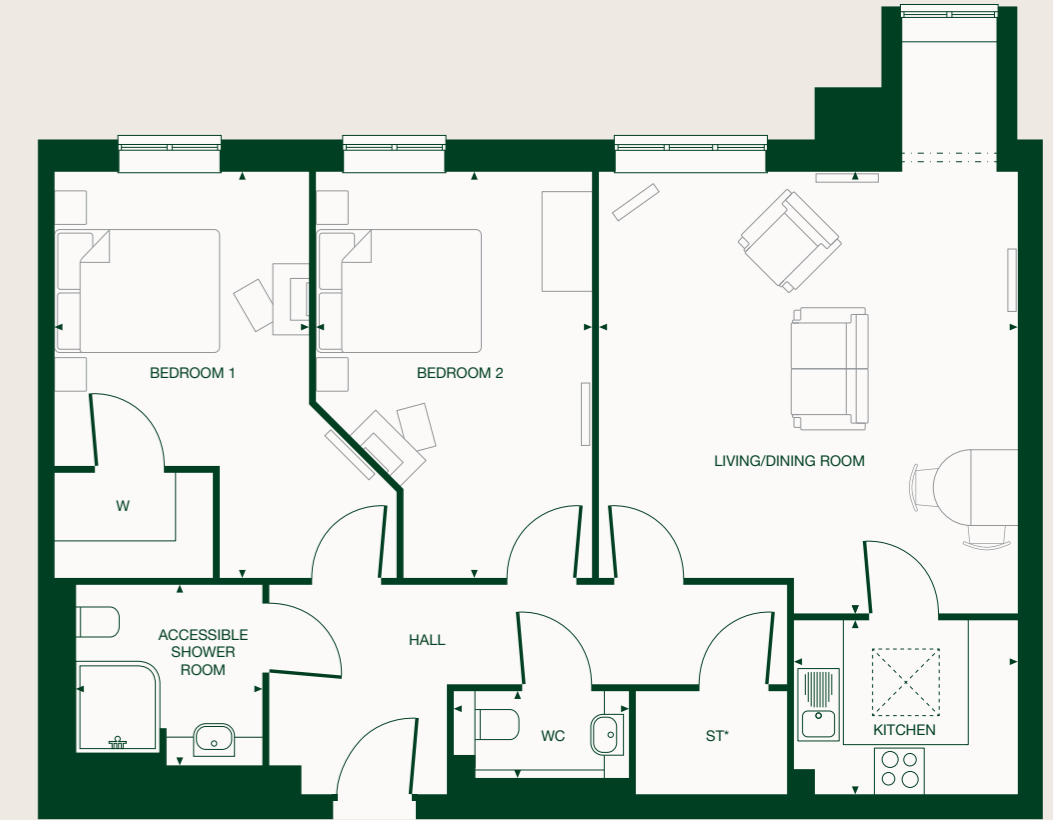
\* Arrows denote measurement points. The dimensions given on plans are for general guidance only, and should not be used for carpet sizes, appliance spaces or items of furniture. Although every effort has been made to ensure accuracy, dimensions quoted are subject to final measurement on completion of actual apartment. No responsibility can be accepted for any misstatement of this leaflet, which is not a contract nor forms any part of any contract. Apartments showcase illustrations only; they may be handed alternately and room sizes may vary. \*Store cupboards contain hot water cylinders, washer dryers, ventilation units and electric meters. Please ask your Sales Consultant for individual apartment plans.

# The Whiteleaf

Apartment:

Second Floor | 35 |

Living room	16' 7" x 17' 5"	(5045mm x 5321mm)
Kitchen	8' 10" x 6' 11"	(2700mm x 2101mm)
Bedroom 1	10' 1" x 16' 1"	(3067mm x 4897mm)
Bedroom 2	11' 0" x 16' 1"	(3341mm x 4897mm)
Shower room	7' 5" x 7' 2"	(2248mm x 2176mm)
WC	6' 0" x 3' 5"	(1839mm x 1051mm)



Dotted lines denote sloping ceiling height.



Velux skylight

W Wardrobe

ST\* Storage cupboard

\* Arrows denote measurement points. The dimensions given on plans are for general guidance only, and should not be used for carpet sizes, appliance spaces or items of furniture. Although every effort has been made to ensure accuracy, dimensions quoted are subject to final measurement on completion of actual apartment. No responsibility can be accepted for any misstatement of this leaflet, which is not a contract nor forms any part of any contract. Apartments showcase illustrations only; they may be handed alternately and room sizes may vary. \*Store cupboards contain hot water cylinders, washer dryers, ventilation units and electric meters. Please ask your Sales Consultant for individual apartment plans.



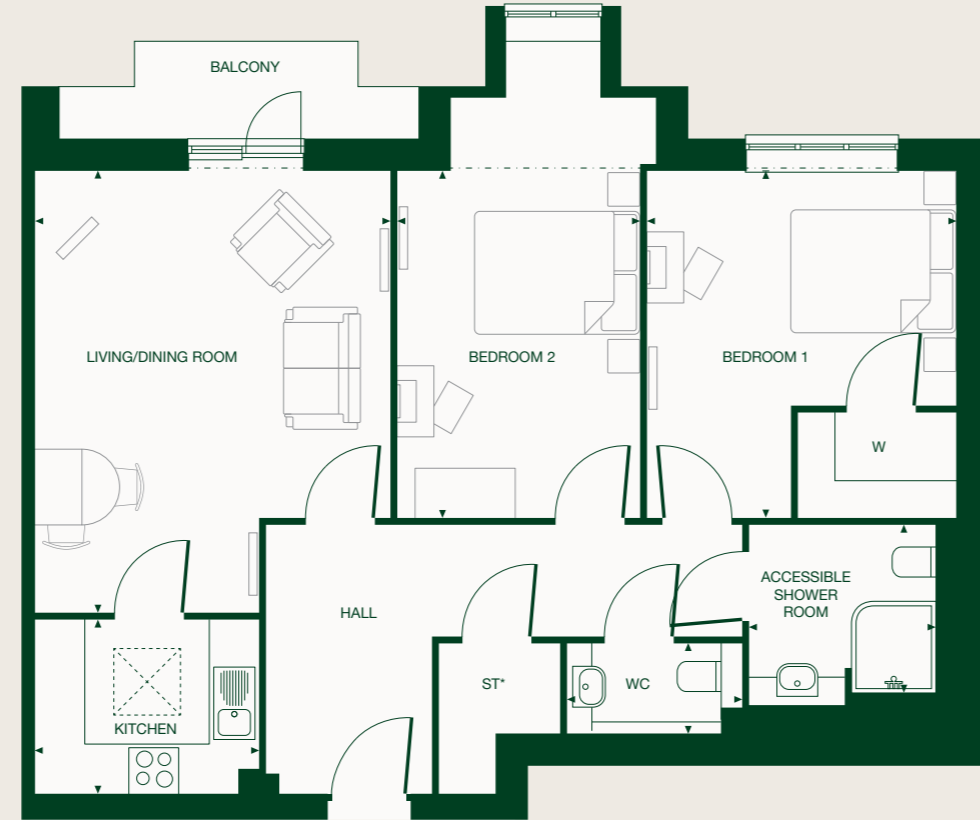
# The Woodcote

Apartment:

**Second Floor** | 36 |

Living room	14' 0" x 17' 5"	(4277mm x 5321mm)
Kitchen	8' 10" x 6' 11"	(2701mm x 2101mm)
Bedroom 1	12' 3" x 13' 8"	(3725mm x 4178mm)
Bedroom 2	9' 7" x 16' 6"	(2928mm x 5060mm)
Shower room	7' 5" x 6' 8"	(2248mm x 2028mm)
WC	6' 0" x 3' 7"	(1839mm x 1090mm)

\* Arrows denote measurement points. The dimensions given on plans are for general guidance only, and should not be used for carpet sizes, appliance spaces or items of furniture. Although every effort has been made to ensure accuracy, dimensions quoted are subject to final measurement on completion of actual apartment. No responsibility can be accepted for any misstatement of this leaflet, which is not a contract nor forms any part of any contract. Apartments showcase illustrations only; they may be handed alternately and room sizes may vary. \*Store cupboards contain hot water cylinders, washer dryers, ventilation units and electric meters. Please ask your Sales Consultant for individual apartment plans.



Dotted lines denote sloping ceiling height.

☒ Velux skylight

W Wardrobe  
ST\* Storage cupboard

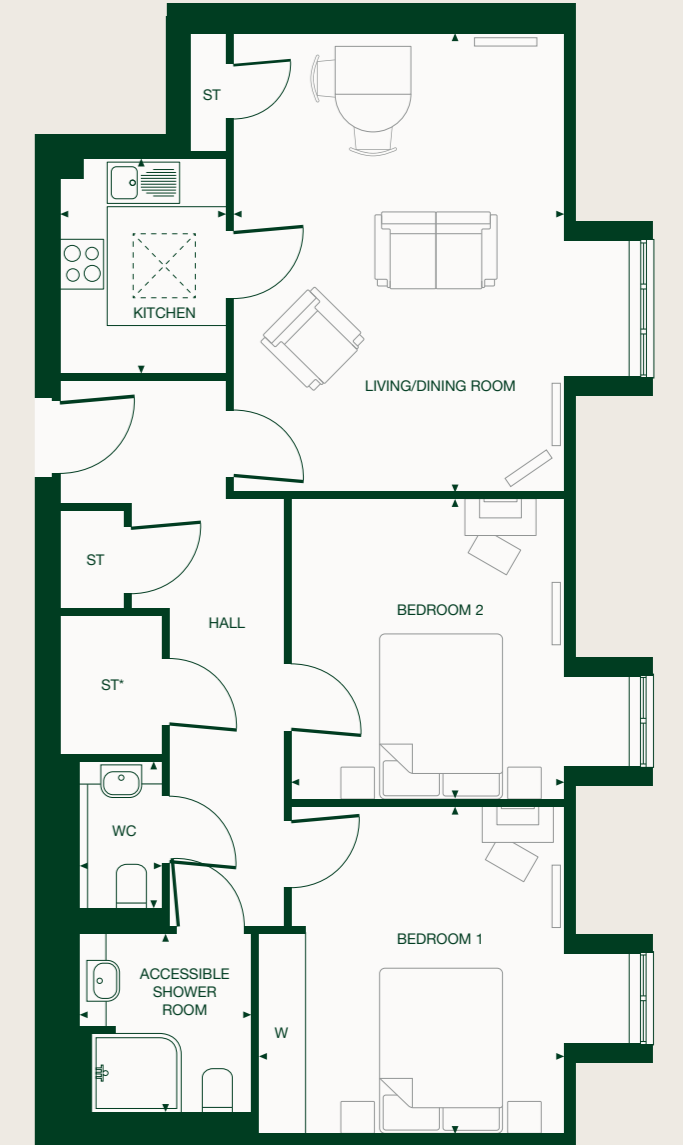
# The Wycombe

Apartment:

**Second Floor** | 37 | 38^ |

Living room	13' 8" x 18' 11"	(4177mm x 5778mm)
Kitchen	7' 0" x 8' 10"	(2139mm x 2700mm)
Bedroom 1	11' 4" x 12' 5"	(3456mm x 3791mm)
Bedroom 2	12' 8" x 13' 6"	(3859mm x 4126mm)
Shower room	6' 8" x 7' 4"	(2028mm x 2247mm)
WC	3' 5" x 6' 0"	(1050mm x 1839mm)

\* Arrows denote measurement points. The dimensions given on plans are for general guidance only, and should not be used for carpet sizes, appliance spaces or items of furniture. Although every effort has been made to ensure accuracy, dimensions quoted are subject to final measurement on completion of actual apartment. No responsibility can be accepted for any misstatement of this leaflet, which is not a contract nor forms any part of any contract. Apartments showcase illustrations only; they may be handed alternately and room sizes may vary. \*Store cupboards contain hot water cylinders, washer dryers, ventilation units and electric meters. Please ask your Sales Consultant for individual apartment plans.



^Plot 38 is handed

☒ Velux skylight

W Wardrobe  
ST Storage cupboard

# Map



## Supermarkets

- 1 Tesco Superstore
- 2 M&S Simply Food
- 3 Little Waitrose

## Doctors / Dentists

- 4 Rectory Meadow Surgery
- 5 Amersham Health Centre
- 6 Old Amersham Dental Clinic

## Pharmacies

- 7 Tesco Pharmacy
- 8 Hobbs Pharmacy
- 9 Boots Pharmacy

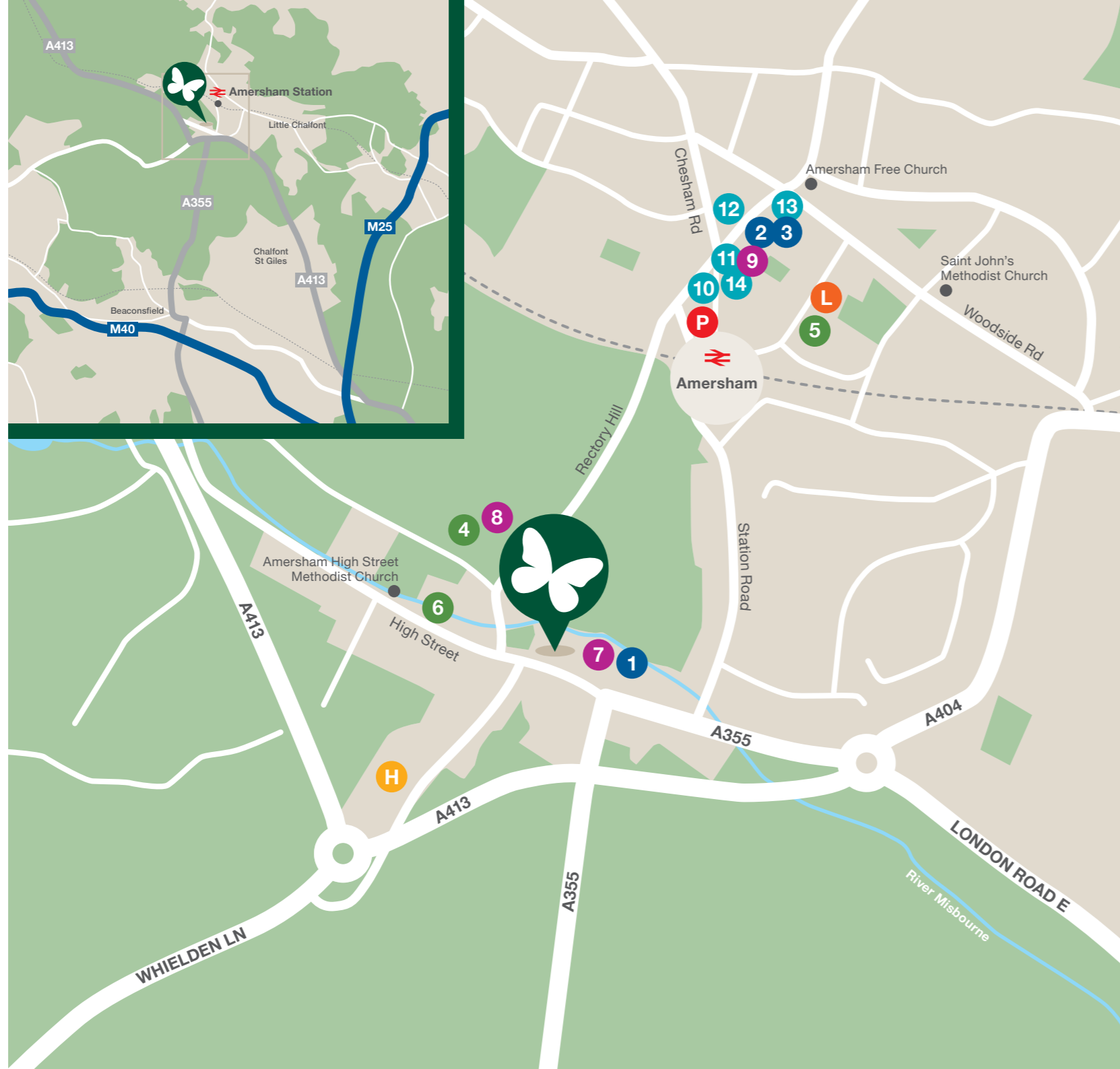
## Banks

- 10 Natwest
- 11 TSB Bank
- 12 Santander
- 13 HSBC
- 14 Barclays Bank

## L Library

## P Post Office

## H Amersham Hospital



# A market town in the Chilterns within easy reach of London

Amersham is a quaint market town, some 30 miles northwest of London. Old Amersham is set in the valley of the River Misbourne with a 13th century parish church, picturesque inns and a museum of local history. There is a variety of shops including exclusive brands such as Jaeger and independent boutiques.

Shops share the High Street with tempting eating places, such as Gilbey's restaurant, in the 17th century former grammar school, The Grocer shops and the celebrated Seasons Café Deli, regarded as one of the best coffee shops in all of England. The many pubs include the 15th century Kings Arms Hotel, the Elizabethan The Crown Hotel and the 16th century Saracen's Head Inn.

Amersham-on-the-Hill offers a wider selection of amenities including Marks & Spencer, Waitrose, library and a range of banks and doctors' surgeries, perfect for every day needs.

Amersham has plenty to offer those who are looking to enjoy retirement to the full. The Chiltern Pools and Gym offers health and fitness classes, a fully refurbished gym, three swimming pools and two climbing walls. Amersham community centre provides a range of activities, including a bridge club, a thriving photographic society and an astronomy group.

There are the surrounding villages to enjoy, each with their own secrets to discover and nearby Junction 2 of the M40 making longer trips simple. But while the rolling Buckinghamshire countryside is hard to resist, London beckons. The Metropolitan line means the West End, with its shopping, shows and nightlife is just 45 minutes away.

The pleasure of a country town with London on your doorstep. A McCarthy & Stone retirement apartment at Chiltern Place really can let you enjoy the best of both worlds.



Old Amersham



Chilterns countryside



Amersham Museum

# Chiltern Place

AMERSHAM

Chiltern Place, The Broadway, Amersham, Buckinghamshire HP7 0HL

Please call us free on **0800 201 4106** and we'll help you find the perfect apartment  
or visit [mccarthyandstone.co.uk/chiltern-place](https://mccarthyandstone.co.uk/chiltern-place)



**McCarthy & Stone**

— Retirement living to the full —

All internal images show typical interiors and purchasers are advised that the furniture, fixtures and fittings are for visual representation only and do not depict the actual finish of any individual property. No responsibility can be accepted for any misstatement in this brochure, which is not a contract nor forms any part of any contract. The company also reserves the right to alter specification without notice. Age restrictions apply on all retirement developments. If there are any important matters which are likely to affect your decision to buy, please contact the Sales Consultant before travelling to view. If you are using a Sat Nav system you may need the full address of this development. The postcode is newly created by Royal Mail and may not be accurate for some months. Details correct at time of print. Printed August 2019. A development by McCarthy & Stone Retirement Lifestyles Limited. Please write to us at: Customer Communications, McCarthy & Stone North London, Prospect Place, 85 Great North Road, Hatfield, Hertfordshire, AL9 5DA or email us at: [comments@mccarthyandstone.co.uk](mailto:comments@mccarthyandstone.co.uk)