



LIVE LIFE YOUR WAY.

Exclusively for the over 60s, our brand new development is situated on the charming and traditional high street of Middlewich, a town famous for its canal network and narrowboat holidays.

We pour our heart and soul into creating developments that give you the freedom to do more of the things you love. Each one is thoughtfully designed to nurture a vibrant, lively community. They are also built to the highest standards. Roman Court is no exception, comprising of 50 one and two bedroom properties. Each apartment is exquisitely finished and comes fitted with modern kitchen appliances, carpets and flooring throughout.

This considered approach continues into the entrance and lobby. The stylish elegance makes you feel immediately at home offering a warm welcome to homeowners, friends and family alike. Take a few steps further and you'll enter

the social hub of Roman Court.

You will be able to enjoy the benefit of owning your own home while being part of a close-knit community. You can socialise with friends and neighbors in the comfort of the beautifully light and airy communal lounge. Its spacious design encourages quick chats, leisurely catch ups or spirited social events that go long into the evening. There are lots of quiet spots too if you just fancy time with a newspaper or a good page turner.

Leave the lounge through the exterior door and you'll arrive at the outdoor terrace. It's a lovely position from which to admire the beautifully planted and immaculately maintained gardens. The choice of shrubs and plants make it a garden for all seasons. Not only is it pleasure to enjoy, it's also effortless to look after. We take care of all the outside spaces for you. Simply pick your seat and soak up the sunshine throughout the warmer months.

A large print version of this brochure is available on request.

This brochure is not a contract and does not form any part of a contract. We are not responsible for any misstatement in this brochure. All content, terms and conditions are correct at the time of going to print. We have the right to alter specifications without notice. Age restrictions apply on all retirement developments. If there are any important matters which are likely to affect your decision to move, please contact the Sales Consultant before travelling to view a development.

January 2022



More than 90% of our customers say they would recommend us, which means we've been awarded the maximum 5-star rating for customer satisfaction. We've achieved this rating every year we have taken part in the survey.

To find out more, call **0800 201 4106**
or visit mccarthystone.co.uk/roman-court

Roman Court coming soon to
Wheelock Street, Middlewich, Cheshire, CW10 9RL

McCARTHY STONE
Life, well lived

McCarthy & Stone Retirement Lifestyles Limited, 4th Floor, 100 Holdenhurst Road, Bournemouth, Dorset BH8 8AQ.
Imagery is representative and facilities vary by location.

2503-MDD-RMN-PLB-01-22

ROMAN COURT

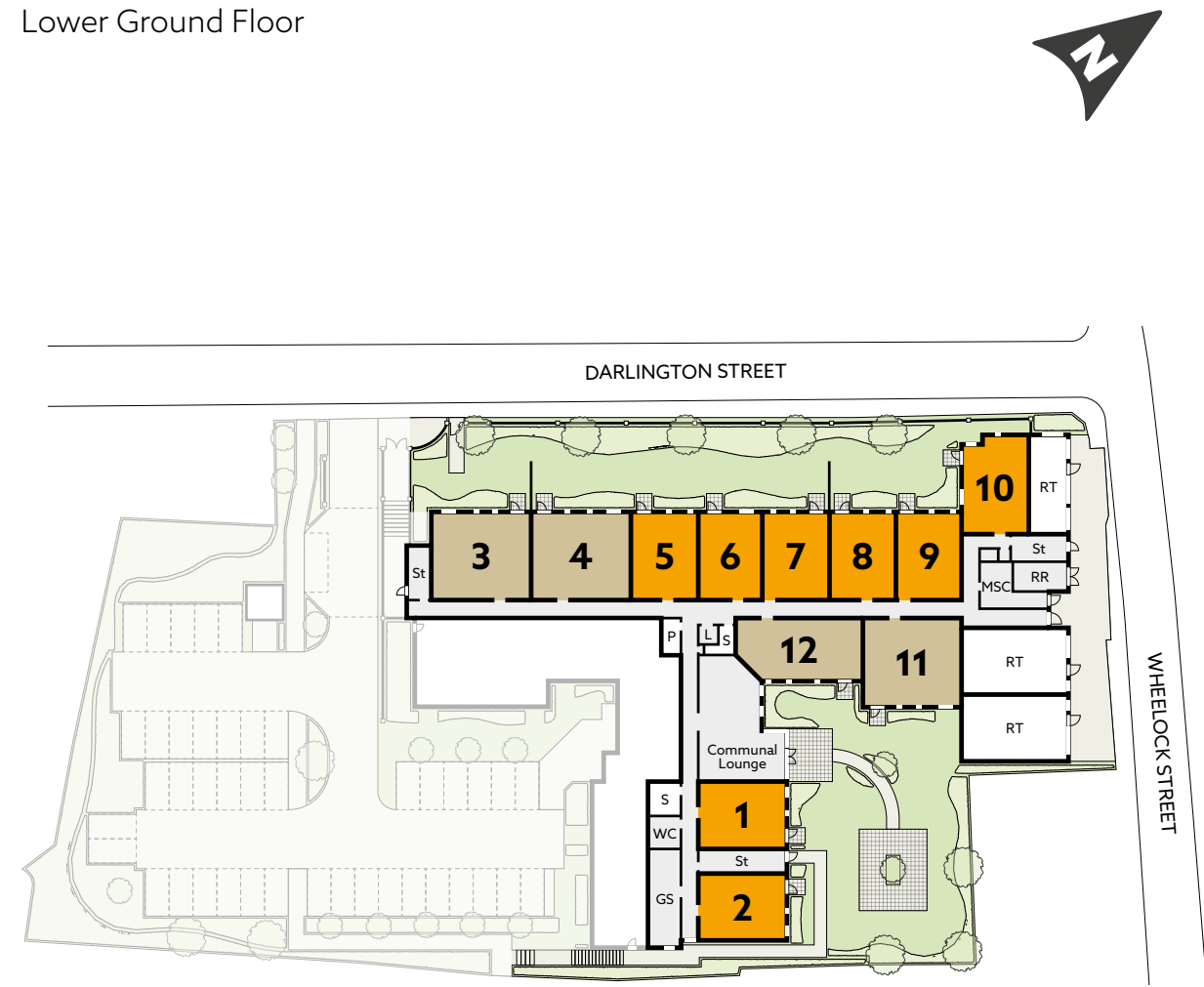
COMING SOON TO WHEELLOCK STREET, MIDDLEWICH



McCARTHY STONE
Life, well lived

DEVELOPMENT OVERVIEW

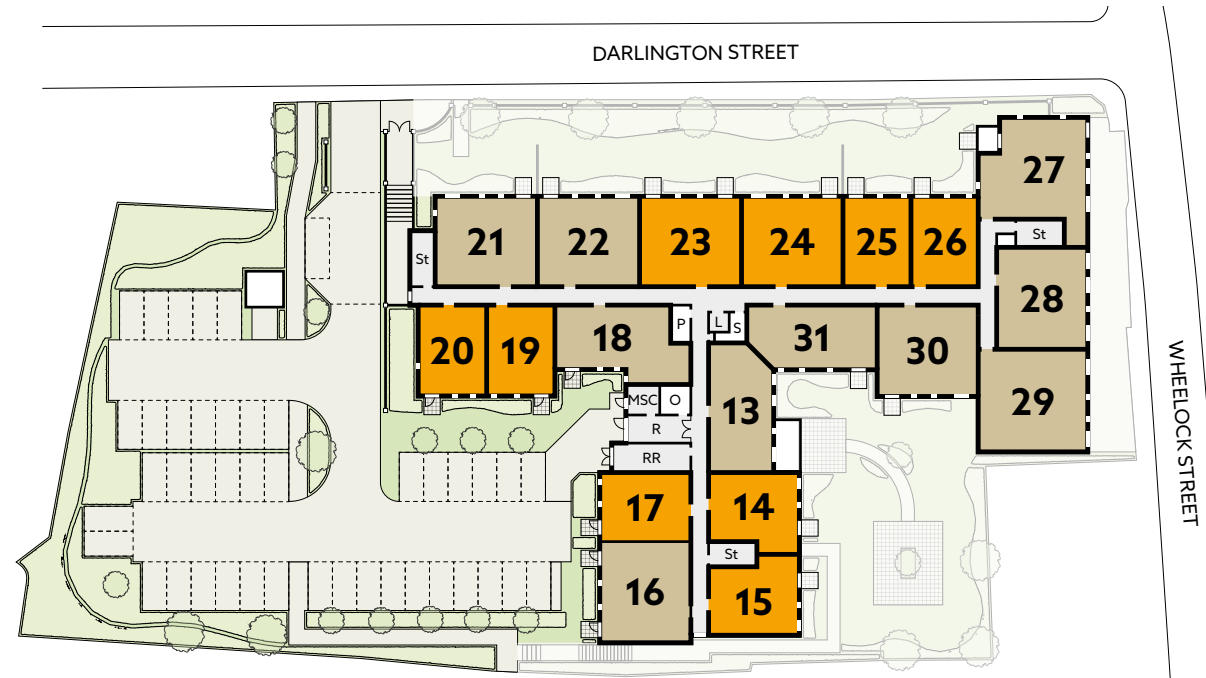
Lower Ground Floor



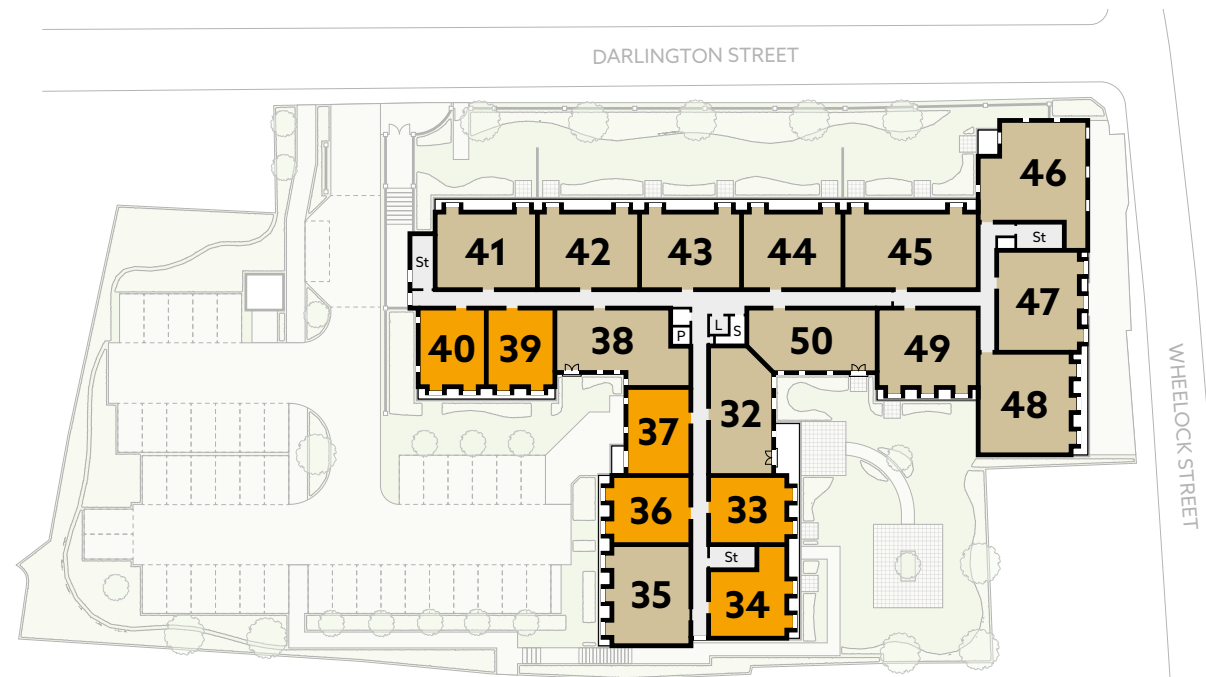
- 1 bedroom apartment
- 2 bedroom apartment
- Communal Areas

- GS - Guest Suite
- L - Lift
- MSC - Mobility Scooter Charging
- O - Office
- P - Plant Room
- R - Reception Lobby
- RR - Refuse & Recycling
- RT - Retail Unit
- S - Store
- St - Stairwell

Ground Floor

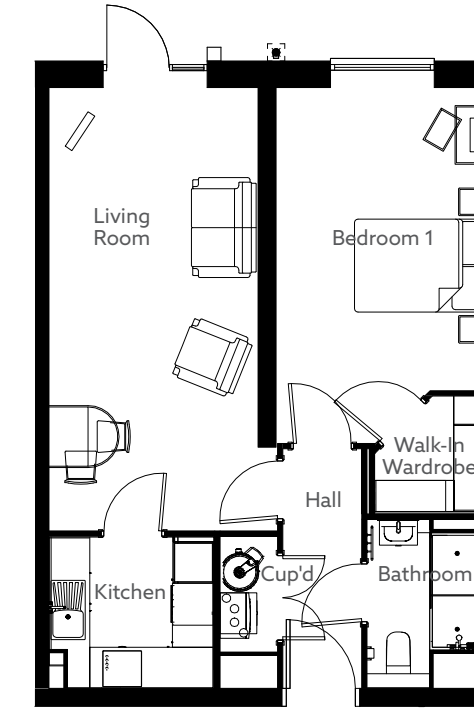


First Floor



TYPICAL APARTMENT LAYOUTS

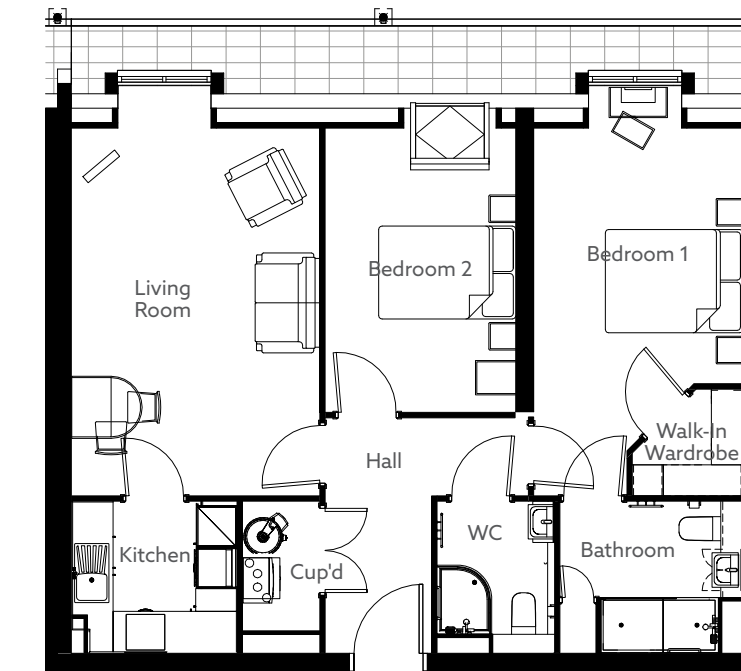
One Bedroom



Approximate room sizes

- Living
3031mm x 6438mm / 9' 11" x 21' 1"
- Kitchen
2402mm x 2185mm / 7' 11" x 7' 2"
- Bedroom
3031mm x 5168mm / 9' 11" x 16' 11"
- Bathroom
1710mm x 2449mm / 5' 7" x 8' 0"

Two Bedroom



Approximate room sizes

- Living
3603mm x 5977mm / 11' 10" x 19' 7"
- Kitchen
2400mm x 2200mm / 7' 10" x 7' 3"
- Bathroom
2650mm x 2200mm / 8' 8" x 7' 3"
- Bedroom One
3033mm x 5977mm / 9' 11" x 19' 7"
- Bedroom Two
2760mm x 4627mm / 9' 1" x 15' 2"